

## No-Weld Element Adapter Instructions

Buy one of these from a local hardware store.

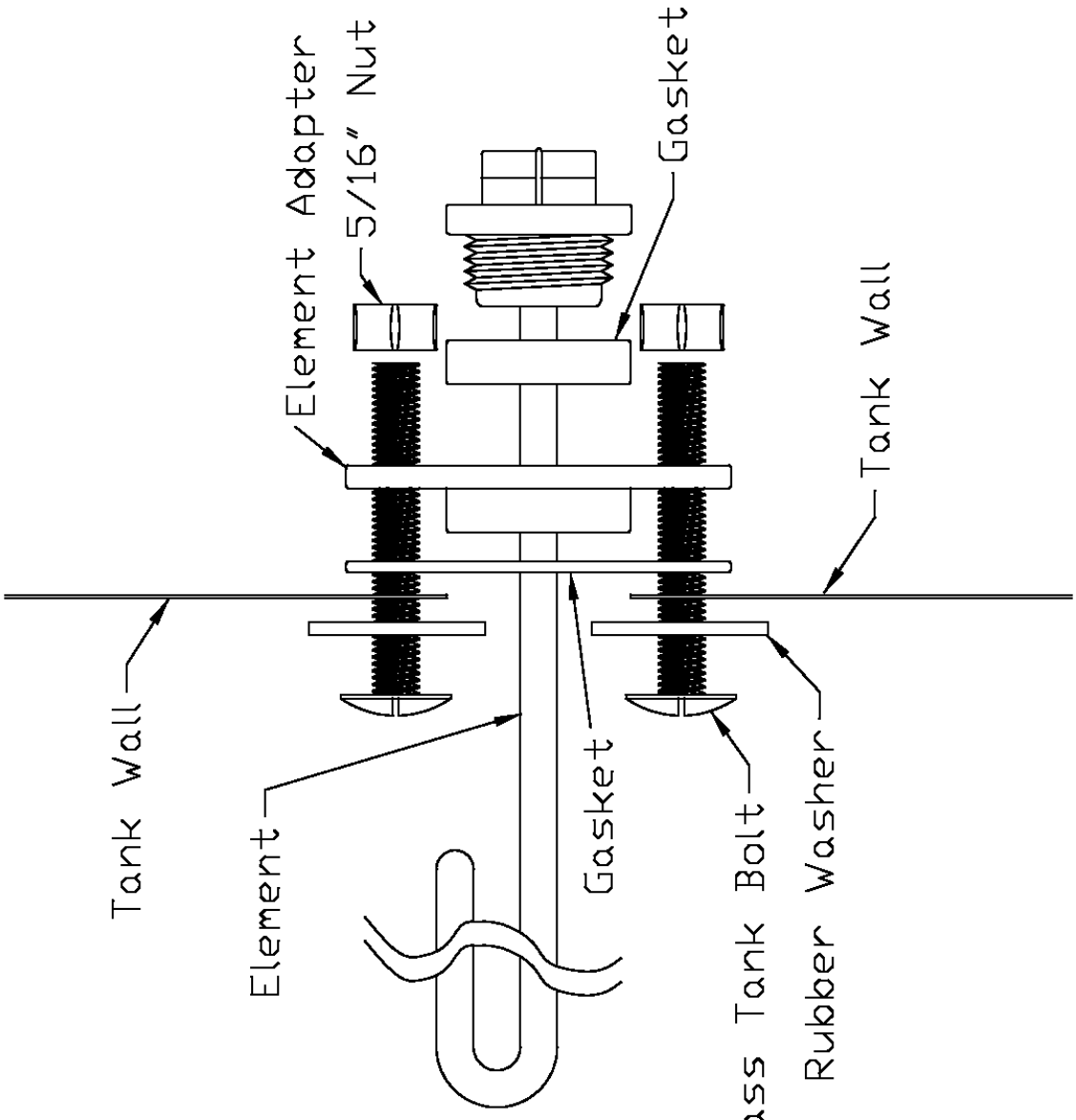


Also buy one of these.



First use the adapter gasket as a guide, and drill the four holes for the corners. Then use a Dremel or hole saw or whatever method is available and cut the large hole in the center. Insert the bolts through the rubber washers. Insert the bolts into the drilled holes from the inside of the boiler. Place the large gasket onto the bolts and then the adapter plate. Screw the nuts up onto the bolts and tighten. Put the gasket onto the element and screw into the hole. Assemble should be tested for leaks. If there are leaks, sometimes a double gasket is needed between the adapter and the boiler.

Here is a picture for guidance.



Tank Wall

Element

Element Adapter

5/16" Nut

Gasket

5/16" Brass Tank Bolt

Rubber Washer

Tank Wall

Gasket